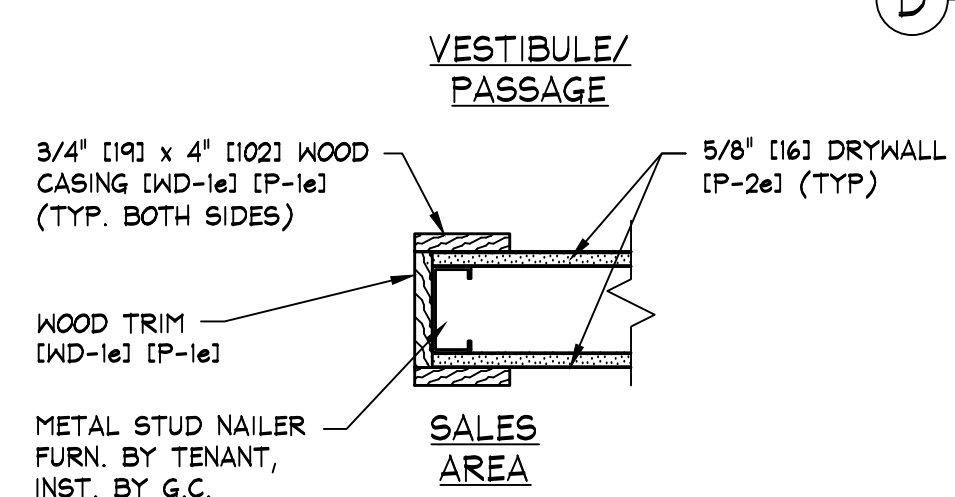
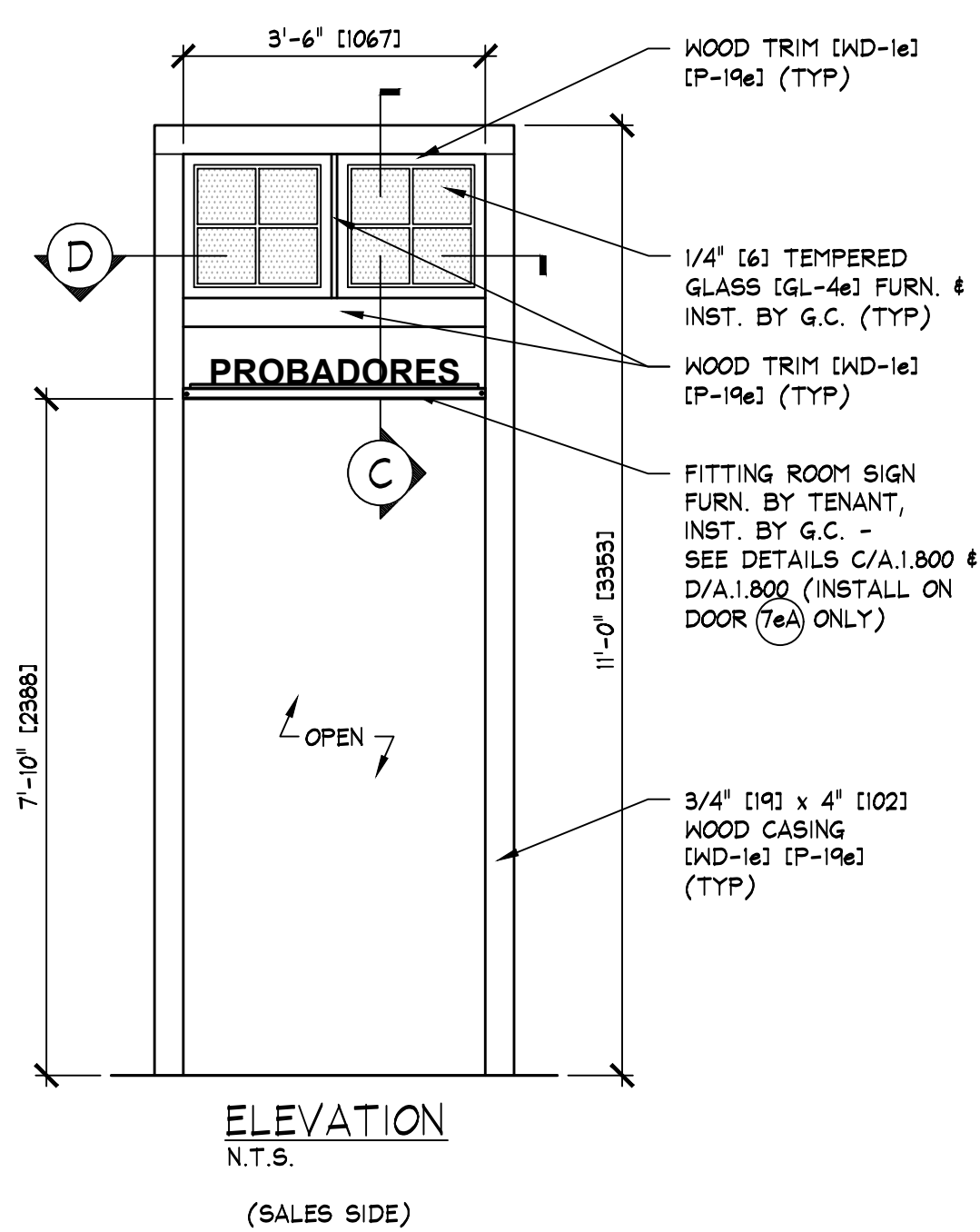


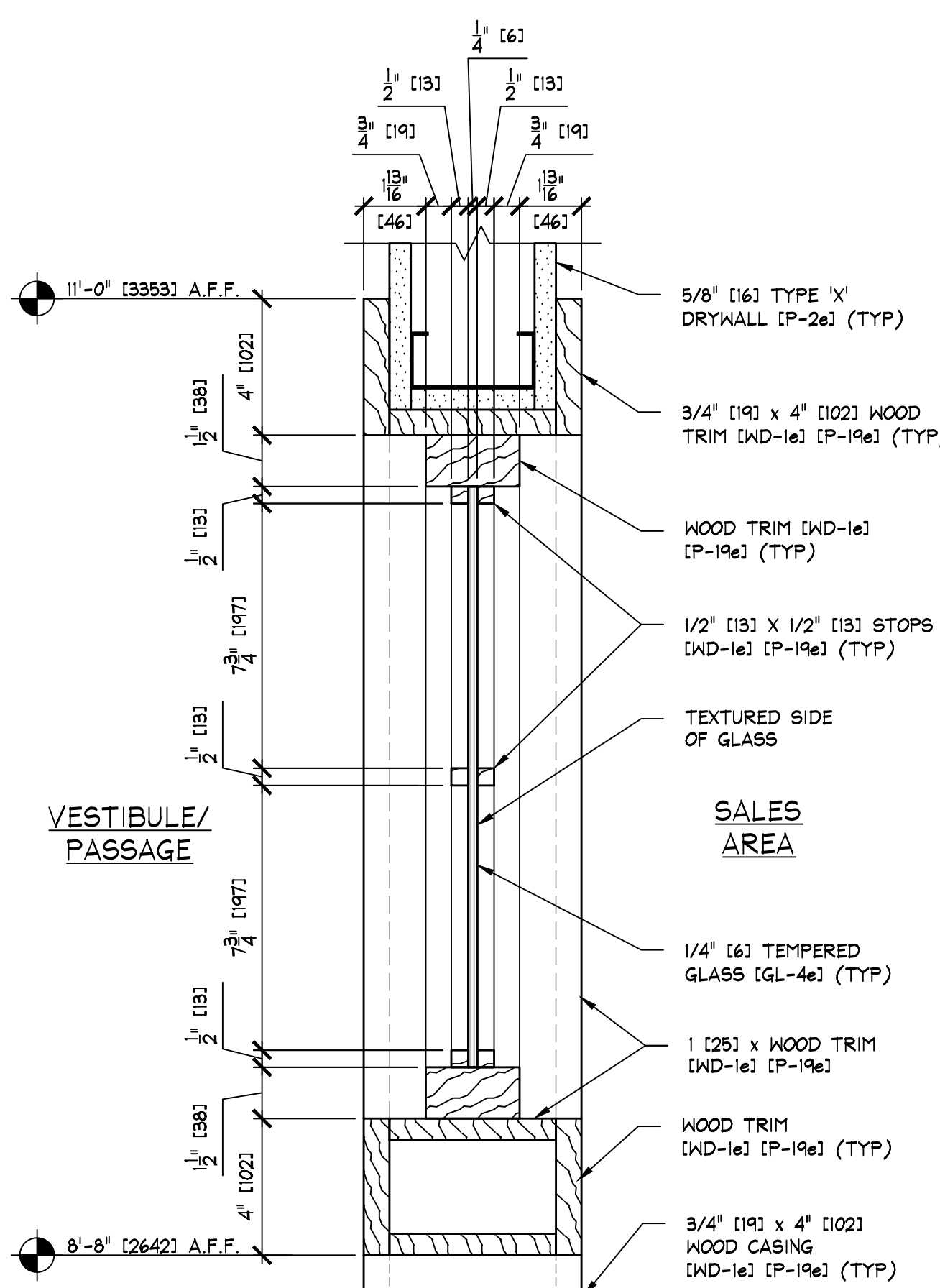
(D) SECTION @ TRANSOMS
SCALE: 3" = 1'-0" [1:4]



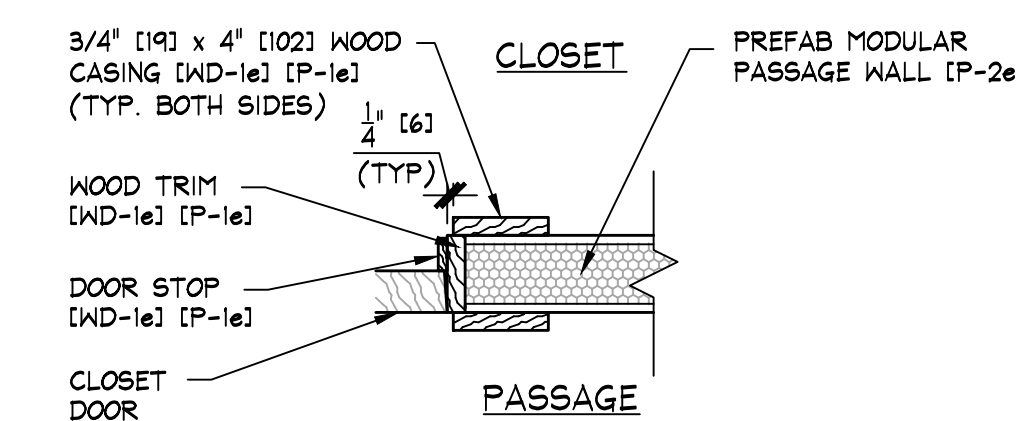
JAMB DETAIL
SCALE: 1 1/2" = 1'-0" [1:8]



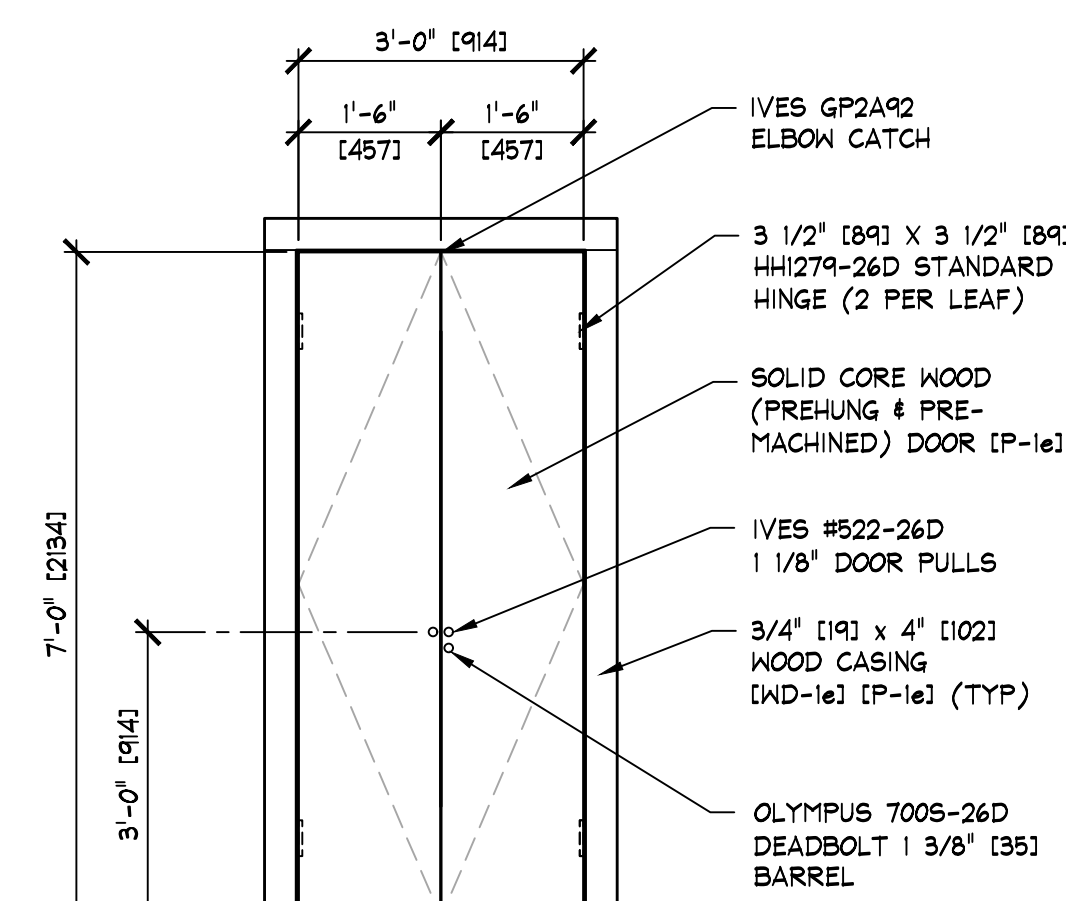
ELEVATION
N.T.S.
(SALES SIDE)



(C) SECTION @ TRANSOMS
SCALE: 3" = 1'-0" [1:4]



JAMB DETAIL
SCALE: 1 1/2" = 1'-0" [1:8]



ELEVATION
N.T.S.
(VESTIBULE SIDE)

TeTeA DOOR DETAILS
SCALE: AS SHOWN

10e DOOR DETAILS
SCALE: AS SHOWN

NOTE:
DOOR DETAILS SHOWN ARE FOR SCHEMATIC PURPOSES ONLY. CHECK FLOOR PLAN FOR ALL SIZES AND SWINGS.

NOTE:
• EXIT DOORS SHALL BE OPENABLE FROM INSIDE WITHOUT USE OF KEY OR SPECIAL KNOWLEDGE OR EFFORT.
• DOOR, FRAME AND HARDWARE FURN. BY TENANT, INST. BY G.C.
• ROCKWOOD #409-26D WALL BUMPER TO BE INSTALLED ON PERPENDICULAR WALL ADJACENT TO HINGES.

NOTE:
IF ALLOWED BY LOCAL CODES FIRE RETARDANT TREATED WOOD CAN BE SUBSTITUTED FOR NAILERS & BLOCKING

NOTE:
PAINTING CONTRACTOR SHALL CAULK ALL INSIDE WOOD CORNERS AND JOINTS BETWEEN TRIM & WALL PRIOR TO PAINTING.

NOTE:
DETAILS, NOTES, AND/OR SPECIFICATIONS ON THIS SHEET NOT LISTED ALPHABETICALLY OR NUMERICALLY HAVE BEEN PURPOSELY OMITTED AND DO NOT PERTAIN TO THIS PROJECT.